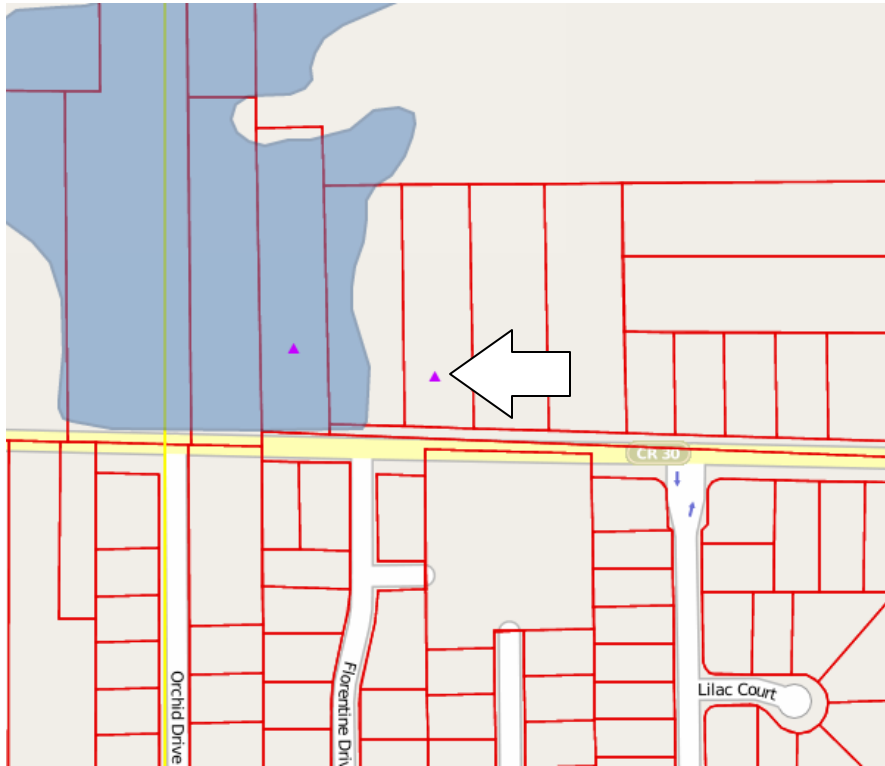
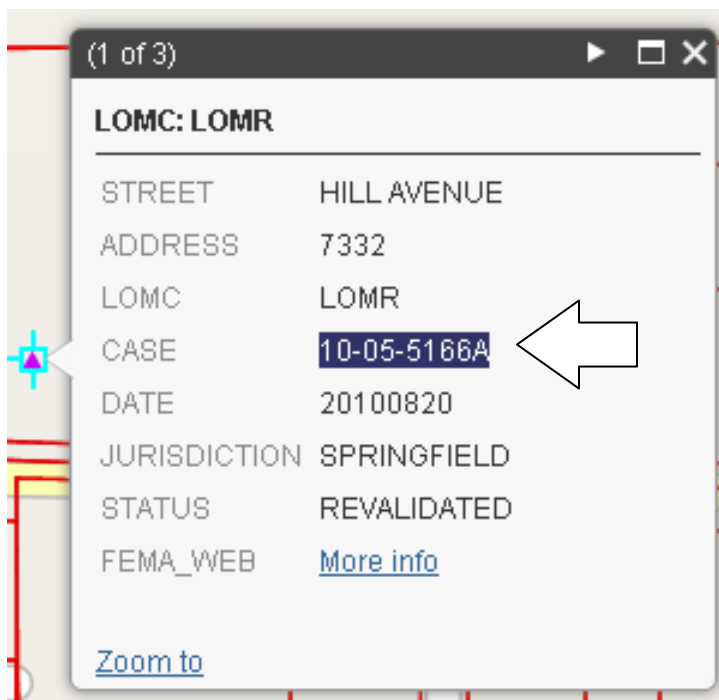


## FINDING YOUR L.O.M.C. (Letter of Map Change)

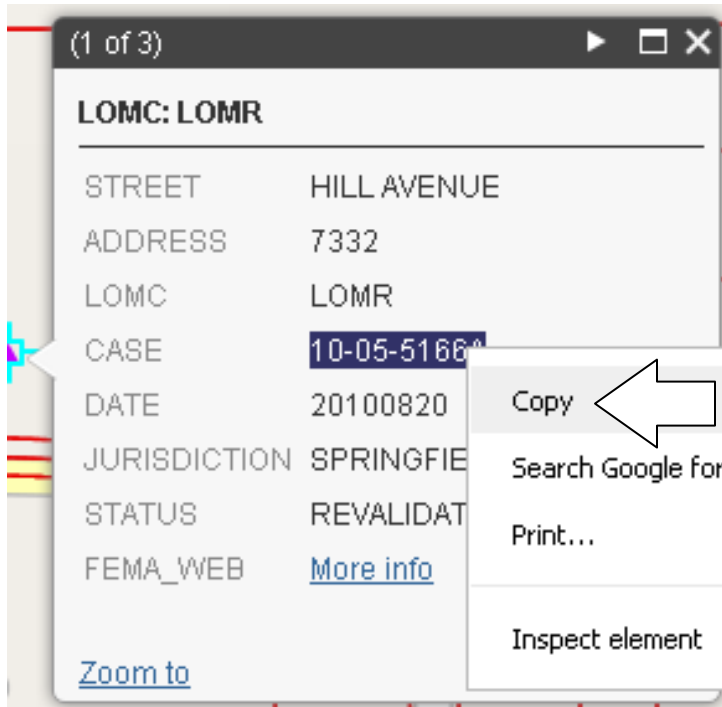
Once you are inside the floodplain map, and you are at your desired location, click on the purple triangle symbol:



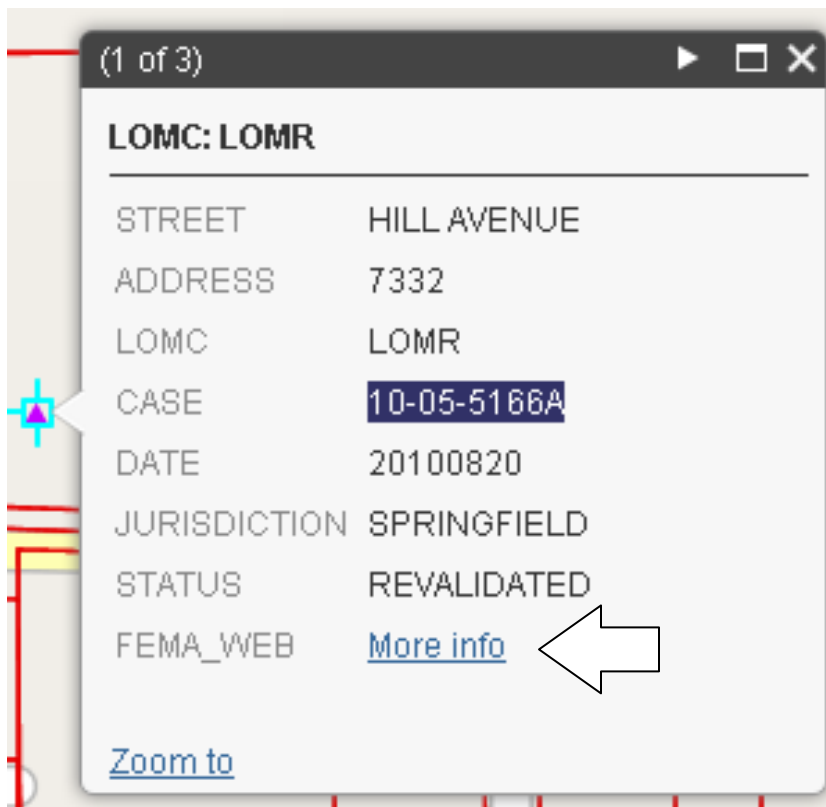
When clicked on, a pop-up box will appear with the LOMC data on it. Now you click and hold your left mouse button down across the Case No, like this, until it's highlighted:



Right click on the highlighted Case No. and click Copy:



Now click the link More Info in the FEMA\_WEB field:



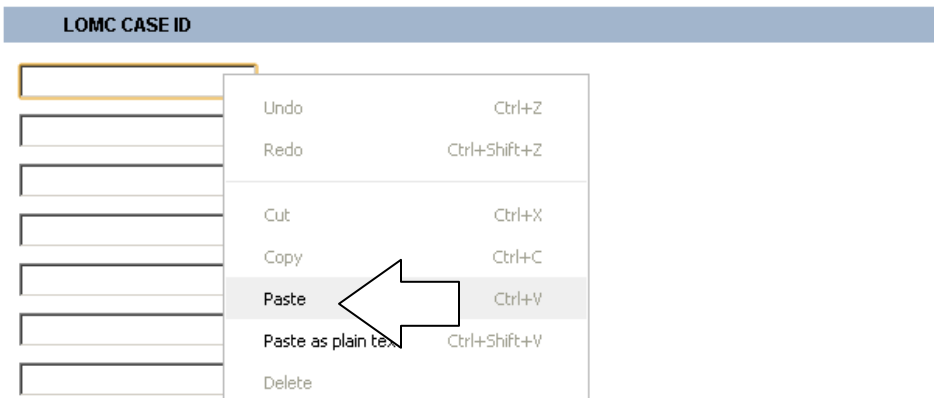
This will take you to the FEMA website to lookup up your LOMC.

Right click the first field and click Paste:



### Letters of Map Change (LOMC)

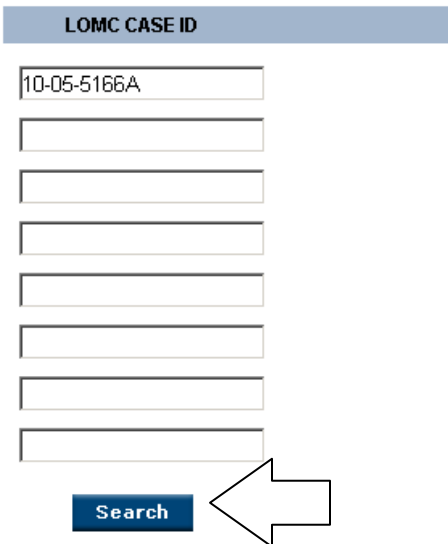
To find a particular Letter of Map Change (LOMC), enter the LOMC Case Id in the box(es) below and click the Search button near the bottom of the page. You can enter up to eight LOMC Case IDs at once.



Now click Search:

### Letters of Map Change (LOMC)


To find a particular Letter of Map Change (LOMC), enter the LOMC Case Id in the box(es) below and click the Search button near the bottom of the page. You can



Here is a link to your LOMC. Just click the icon under View:

Product Catalog | Map Search | Quick Order | Digital Post Office | Help

### LOMC Search Results

Item ID	Item Name	Effective Date	View
10-05-5166A-390359	LOMR-F	08/20/2010	



Your document will download to your computer for you to view.