

Click on the link to one of the viewers:

1. [Survey Documents Online Viewer](#)
2. [Infrastructure Plans Online Viewer](#)
3. [Site Plan Documents Online Viewer](#)

On the left hand side of the screen, you will see available drop down lists for which to search by:

Engineer's Survey Documents

You can select as many drop downs as you wish. Once you've made your selection(s), click the Search button.

Town-Range-Section

Grants & Tracts

SubDivision

Street

Date

CE Road Doc

Search

Reset

If you are not satisfied with your selection and you wish to try again, or if you are wanting to do a new search, you can click the Reset button to clear your selection(s).

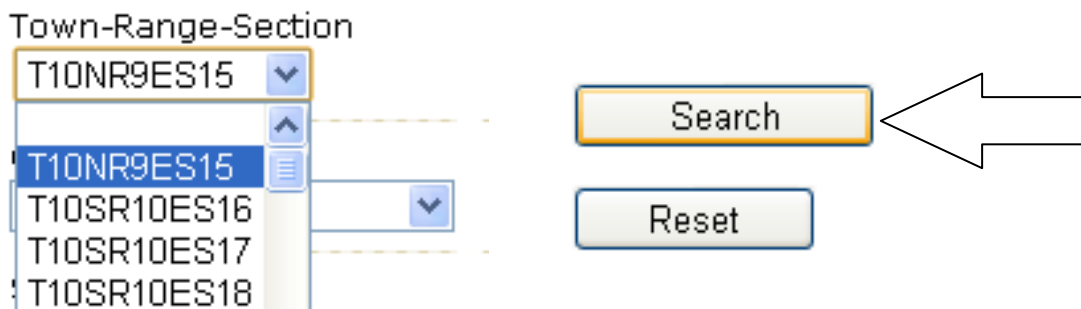
Select criteria in dropdown lists.
Click search.

Once you click the Search button, you should see the results list appear in the right hand side of the screen.

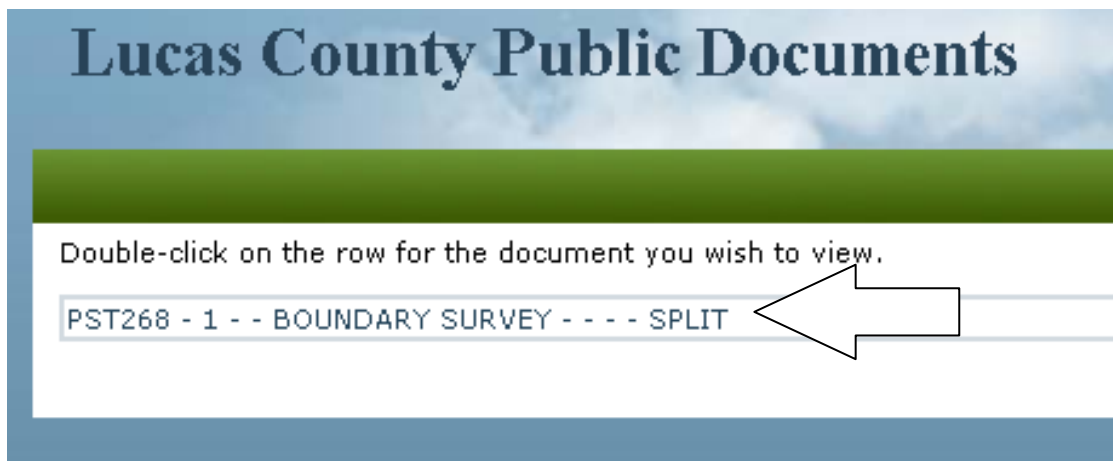
Example

A selection is made under the Town-Range-Section drop down list and the Search button is clicked:

Engineer's Survey Documents

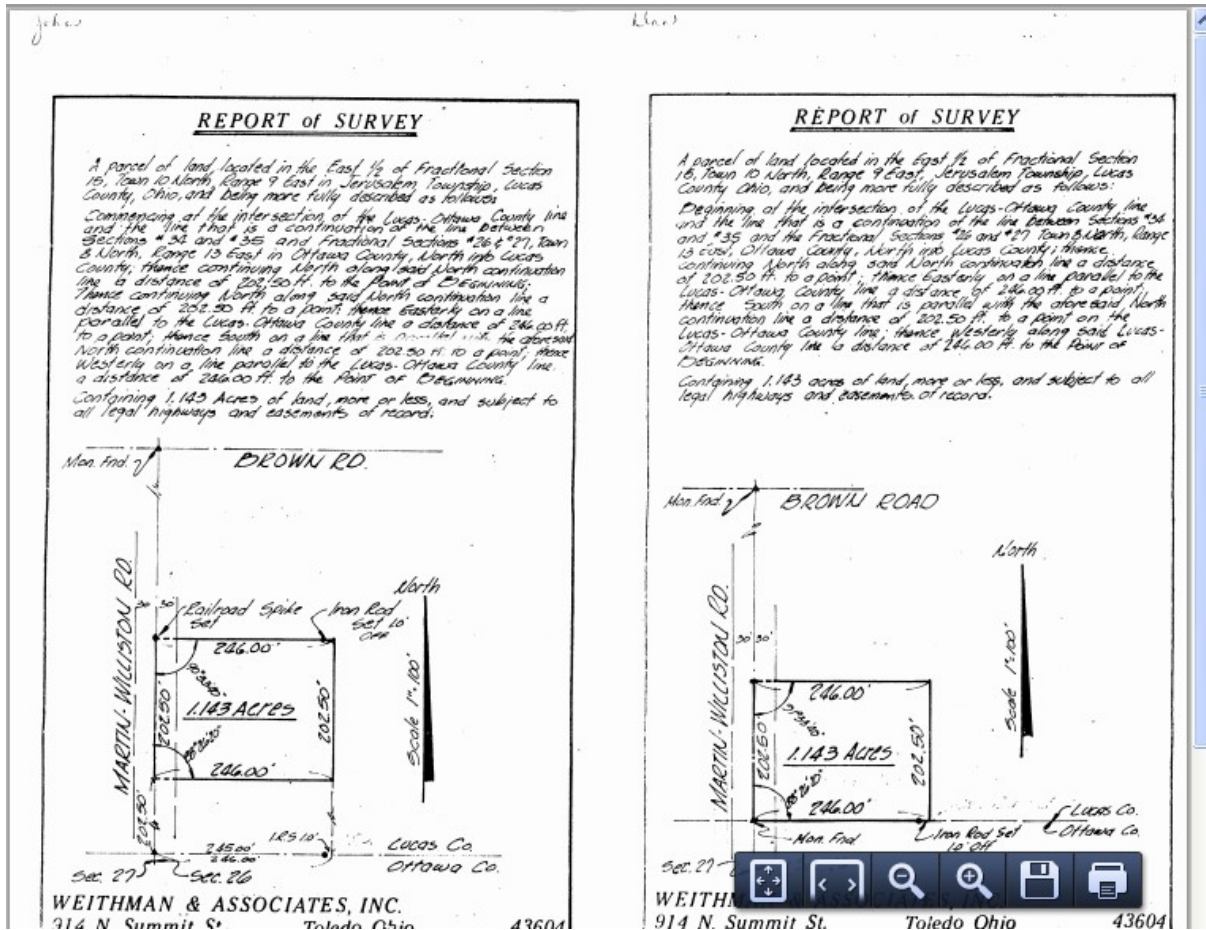


Here is the result on the right hand side:



To view the associated document, double click the result.

This is what you should see:



The document comes up as a PDF formatted file.

The tool bar that appears in the lower right hand side of the screen allows you to do a couple of things:

