

IF YOU ARE INJURED ON THE JOB! THESE ARE THE PLACES YOU CAN GO!

OCCUPATIONAL HEALTH

Independence Health
noten Timbers Medical Center
5757 Monclova Rd.
Maumee, OH 419-891-8003
HOURS: M-F 7:30 a.m. to 4:30 p.m.

Toledo Hospital Occupational Health
2150 W. Central Avenue
Toledo, OH 419-291-5517 *
HOURS: M-F 7:30 a.m. to 4:30 p.m.

Mercy Health-Occupational Health-St. Vincent
2213 Cherry St.
Toledo, OH 419-251-4634
HOURS: M-F 8:00 a.m. to 4:30 p.m.

Mercy Health-Occupational Health-St. Charles
1050 Isaac St., Ste. 16
Oregon, OH 419-696-7493
HOURS:: M-F 8:00 a.m. to 5:00 p.m.

Mercy Health-Occupational Health-Arrowhead
502 The Boulevard
Maumee, OH 419-794-4789
HOURS: M-F 8:00 a.m. to 4:30 p.m.

Concentra Urgent Care
3028 Navarre Avenue
Oregon, OH 43616
HOURS: M-F 8:00 a.m. to 5:00 p.m.

Concentra Urgent Care
7010 Spring Meadows Dr. W #101
Holland, OH 43528
HOURS: M-F 8:00 a.m. to 5:00 p.m.

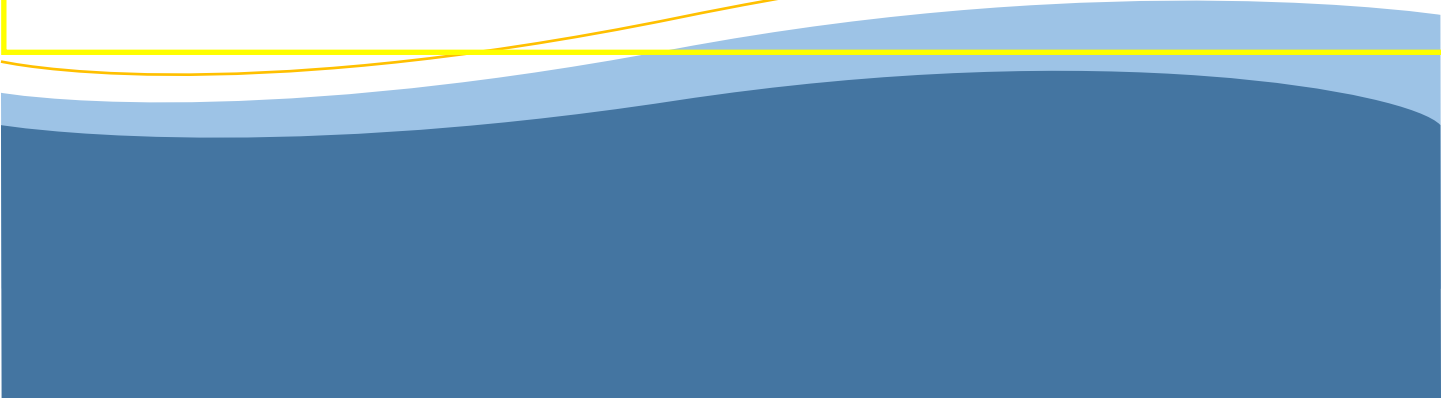
CHECKLIST

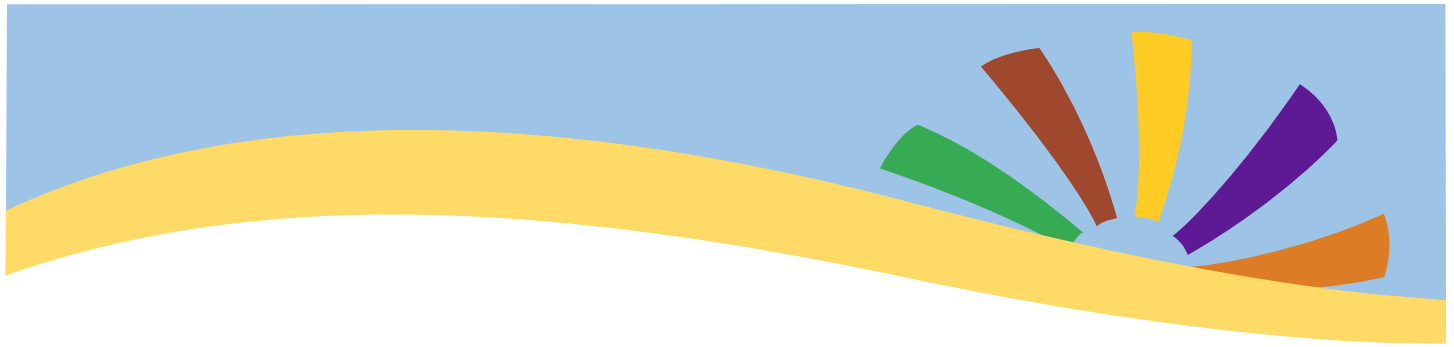
- 1) **Notify Supervisor immediately.**
- 2) **In an emergency, seek treatment immediately at the nearest medical facility.**
- 3) **Complete Incident Report.**
- 4) **In a non-emergency utilize this list for treatment.**
- 5) **Report Injury within 24 Hours to Risk Management**
- 6) **Email copies of incident reports to:**

HealthSafetyIncidents@co.lucas.oh.us

&

WorkersCompensationIncidents@co.lucas.oh.us





IF YOU ARE INJURED ON THE JOB! THESE ARE THE PLACES YOU CAN GO!

EMERGENCY ROOMS – 24 HOURS

Mercy Health-Sylvania Medical Center ER Depart.
3100 King Rd.
Toledo, OH 567-455-5800
HOURS: Open 24 Hours

Promedica Toledo Hospital Emergency Center
2142 N. Cove Blvd.
Toledo, OH 419-291-4101
HOURS: Open 24 Hours

Mercy Health-Perrysburg Hospital
12623 Eckel Junction Rd.
Perrysburg, OH 567-368-1000
HOURS: Open 24 Hours

Promedica Flower Hospital Emergency Center
5200 Harroun Rd.
Sylvania, OH 419-824-1444
HOURS: Open 24 Hours

Mercy Health-St. Anne Hospital
3404 W. Sylvania Ave.
Toledo, OH 419-407-2663
HOURS: Open 24 Hours

Promedica Toledo Hospital Emergency /Unit Care
1075 Medical Center Parkway
Maumee, OH 567-585-0800
HOURS: ER Open 24 Hours
Urgent Care 7:00 a.m. to 9:00 p.m. Daily

Mercy Health-St. Charles Hospital
2600 Navarre Ave.
Oregon, OH 419-696-7200
HOURS: Open 24 Hours

Promedica Bay Park Hospital-Emergency Center
2801 Bay Park Dr.
Oregon, OH 419-690-7900
HOURS: Open 24 Hours

Mercy Health-St. Vincent Hospital
2213 Cherry St.
Toledo, OH 419-251-3232
HOURS: Open 24 Hours

